

# Art and exhibition space - Collegium Helveticum STW B15.2

## Laboratory STW B15.2

### Terms of Use

#### General

---

<b>Size</b>	The total usable area of the Laboratory STW B15.2 is about 45 m <sup>2</sup> .
<b>Utilization and people occupancy</b>	The Laboratory STW B15.2 is approved for sporadic use: <ul style="list-style-type: none"><li>• 3 to 4 events per month under supervision</li><li>• event duration of around 2 hours with limited movement of people (max. 8 to 10 people in the room at the same time).</li></ul>
<b>Permitted events</b>	Exhibitions, presentations, temporary installations, performances. No catering is allowed in the "Laboratory" STW B15.2
<b>Equipment</b>	The Laboratory STW B15.2 is equipped with the following infrastructure: <ul style="list-style-type: none"><li>• picture rails along the outer walls</li><li>• Storage space with tech panel and further exhibition equipment</li><li>• Exhibition lighting with spotlights (most are movable and dimmable)</li><li>• Blackout curtain by the entrance</li></ul>

#### Conditions of Use

---


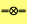

<b>Remarks (climate and ventilation)</b>	<ul style="list-style-type: none"><li>• The Laboratory STW B15.2 has a high relative humidity (&lt; 60 %) as well as seasonal temperature fluctuations. Thus, the Laboratory is only conditionally suitable for certain materials (e.g., not for delicate photographs; not for direct application of paper directly to the walls or floors).</li><li>• The controlled air exchange in the room must never be obstructed. It is thus prohibited to place any object that is longer than 1m, including furniture or exhibits, directly in front of ventilation outlets or parallel to them.</li></ul>
--	---

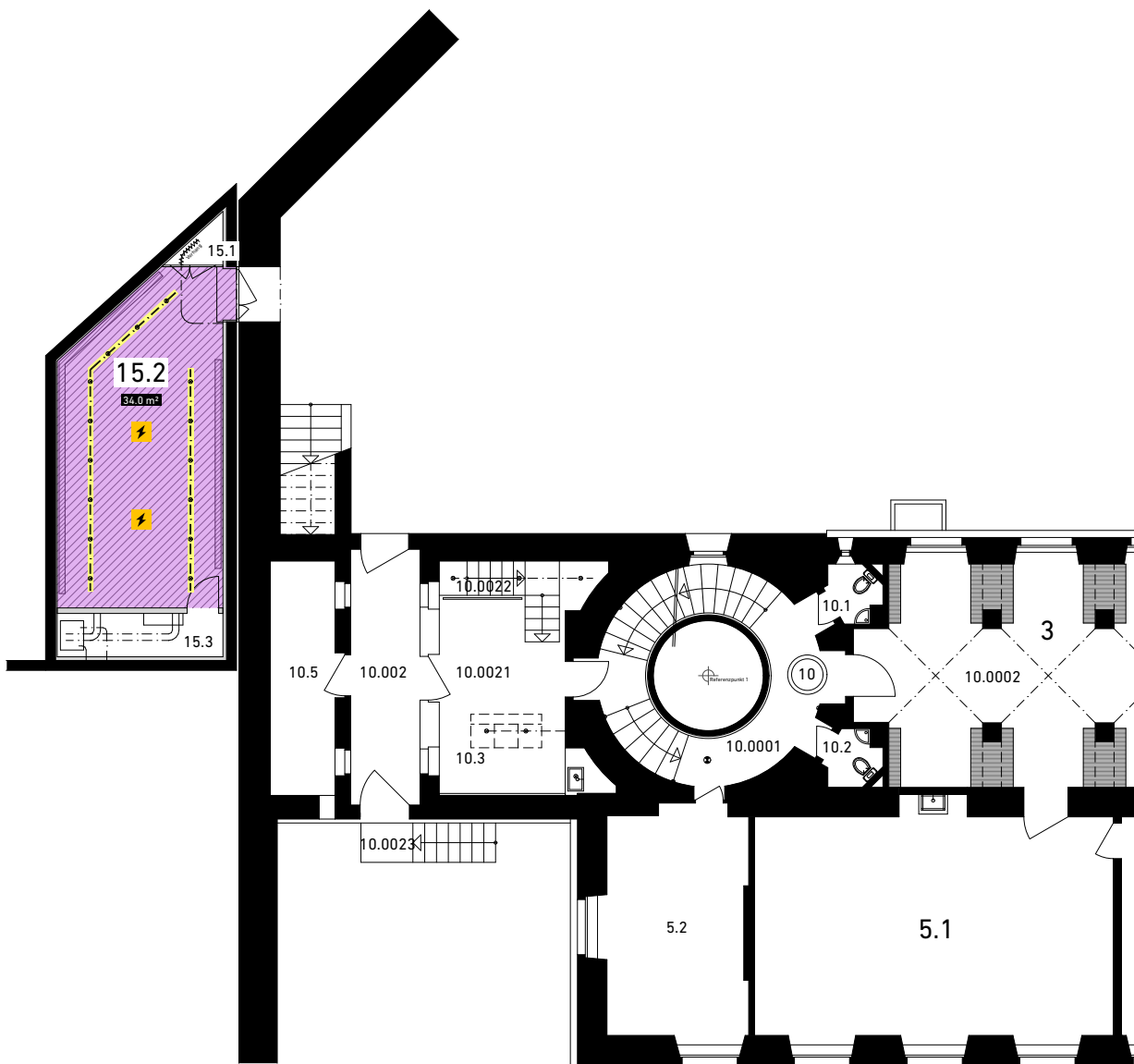
## Art and exhibition space: Laboratory Plan: Floor STW B, Room B15.2

### Room designations

B3	Entrance Hall
B5.1	Seminars / events (RudolfWolfRoom)
B15.2	Art and exhibition space: Laboratory
B10.0002	Corridor / aisle - not assignable

### Legend Room STW B15.2

	Total usable space Laboratory	circa 34 m <sup>2</sup>
	Lighting on the ceiling	
	Power connections	



## Impressions

---

Laboratory STW B15.2

